

HUNTERS®

HERE TO GET *you* THERE

11 Westleigh Park, Bristol, BS14 9TJ

£200,000

Property Images



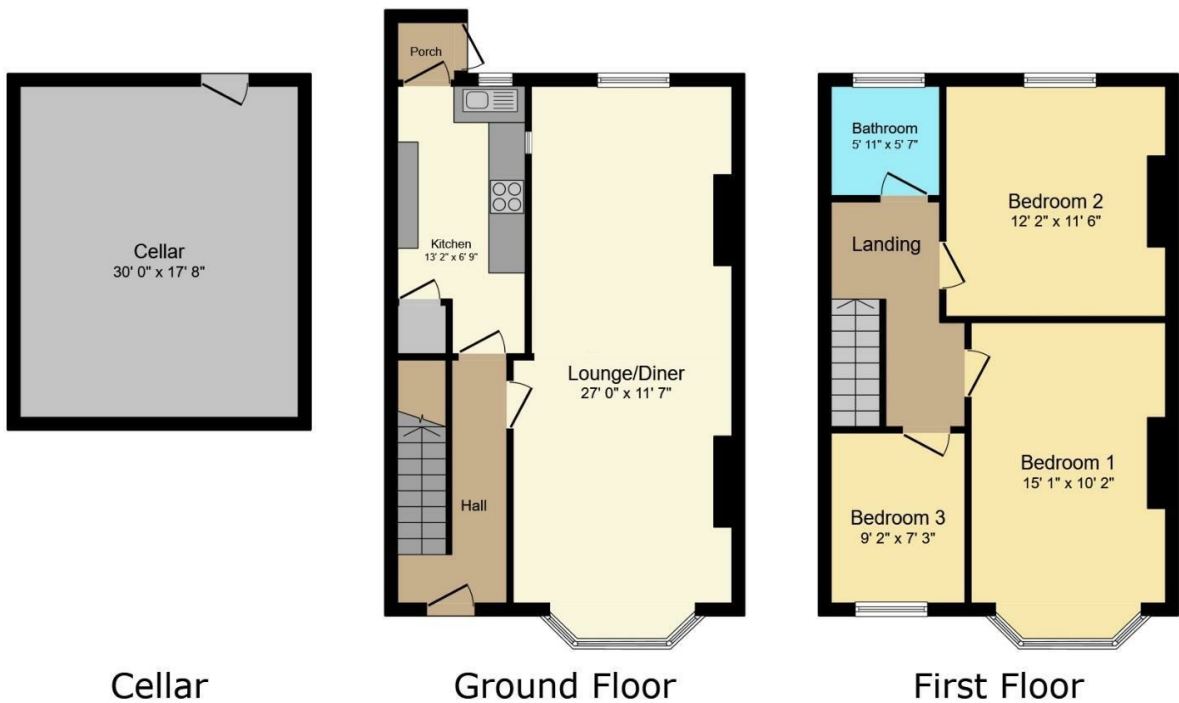
HUNTERS®

HERE TO GET *you* THERE

Property Images

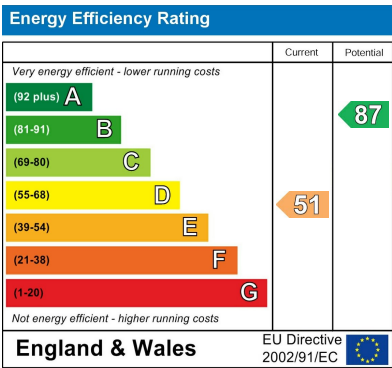


Floorplan

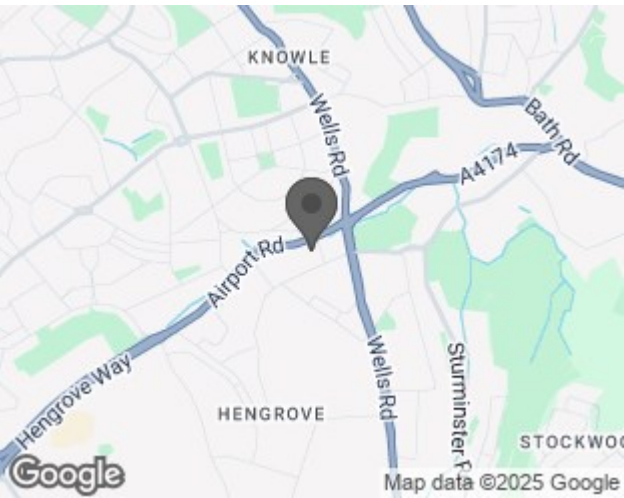


This floor plan is for illustrative purposes only. It is not drawn to scale. Any measurements, floor areas (including any total floor area), openings and orientations are approximate. No details are guaranteed, they cannot be relied upon for any purpose and do not form any part of any agreement. No liability is taken for any error, omission or misstatement. A party must rely upon its own inspection(s). Powered by www.Propertybox.io

EPC



Map



Details

Type: House - Terraced Beds: 3 Bathrooms: 1 Reception: 1 Tenure: Freehold

Summary

CASH BUYERS ONLY - Introducing this three-bedroom home, offering significant potential for modernisation, located in the sought-after area of Hengrove. Ideal for those looking to put their own stamp on a property, this home presents a fantastic opportunity to create a stylish and contemporary living space.

Upon entering, you are greeted by an entrance hall that leads to a spacious lounge/diner, perfect for both relaxing and entertaining. The kitchen, though in need of updating, offers plenty of space for those looking to create a bespoke cooking area. The property features three well-proportioned bedrooms, providing ample accommodation for a family or for use as a home office or guest rooms. A family bathroom completes the interior layout.

Externally, the home benefits from a good-sized rear garden, offering a private outdoor space for gardening or relaxation. Additionally, there is a spacious cellar, providing extra storage or potential for conversion, subject to necessary permissions. The property also boasts excellent potential for extension, subject to planning approval (STPP), allowing the new owner to further enhance and personalise the space.

Offered with no onward chain, this property presents an exciting opportunity for buyers looking to create their ideal home in a convenient and well-connected location.

Features

• In Need of Modernisation • Three Bedrooms • Terraced • Enclosed Rear Garden • Cellar • Potential to extend (STPP) • No Chain • Contact today to view!